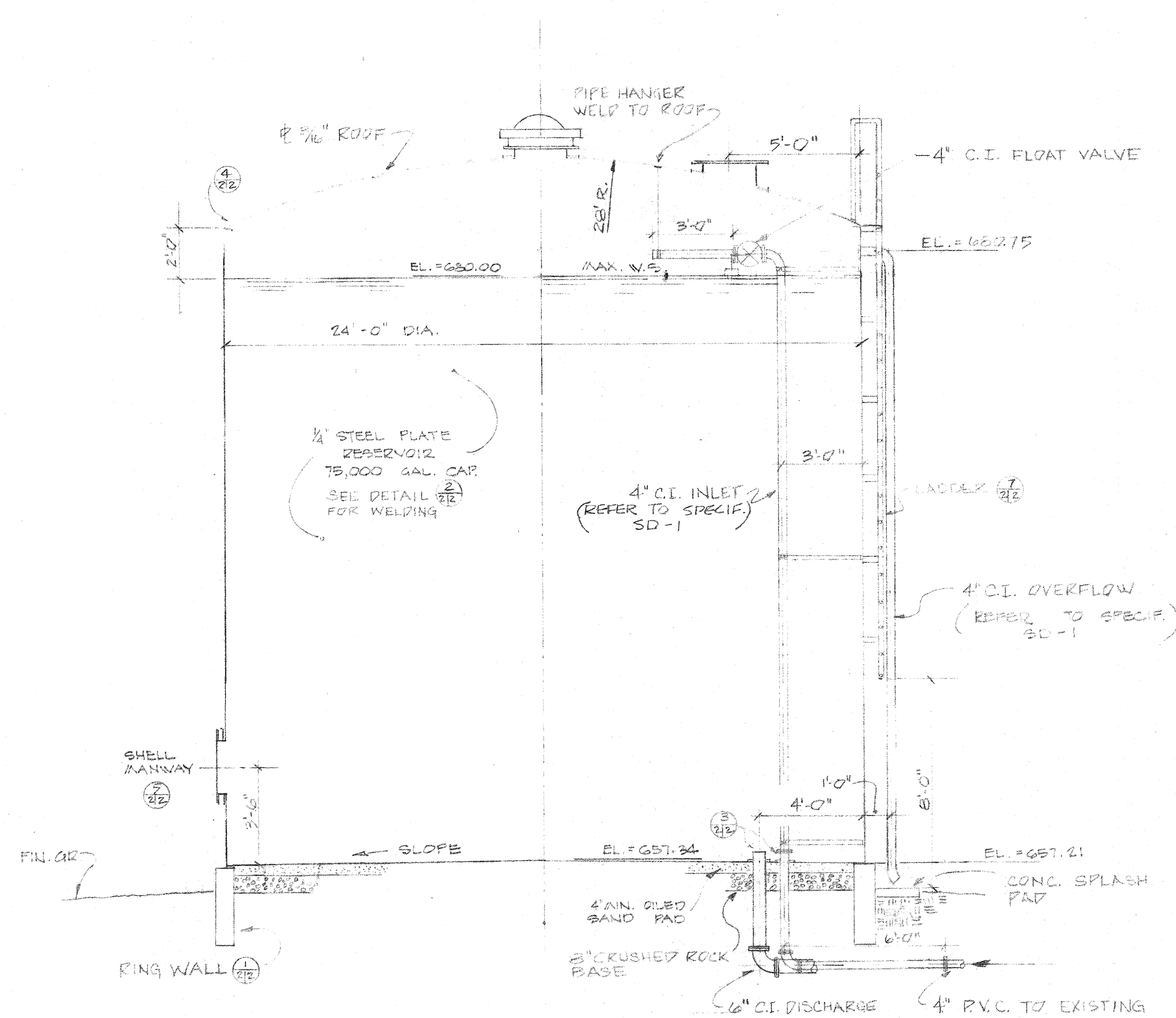
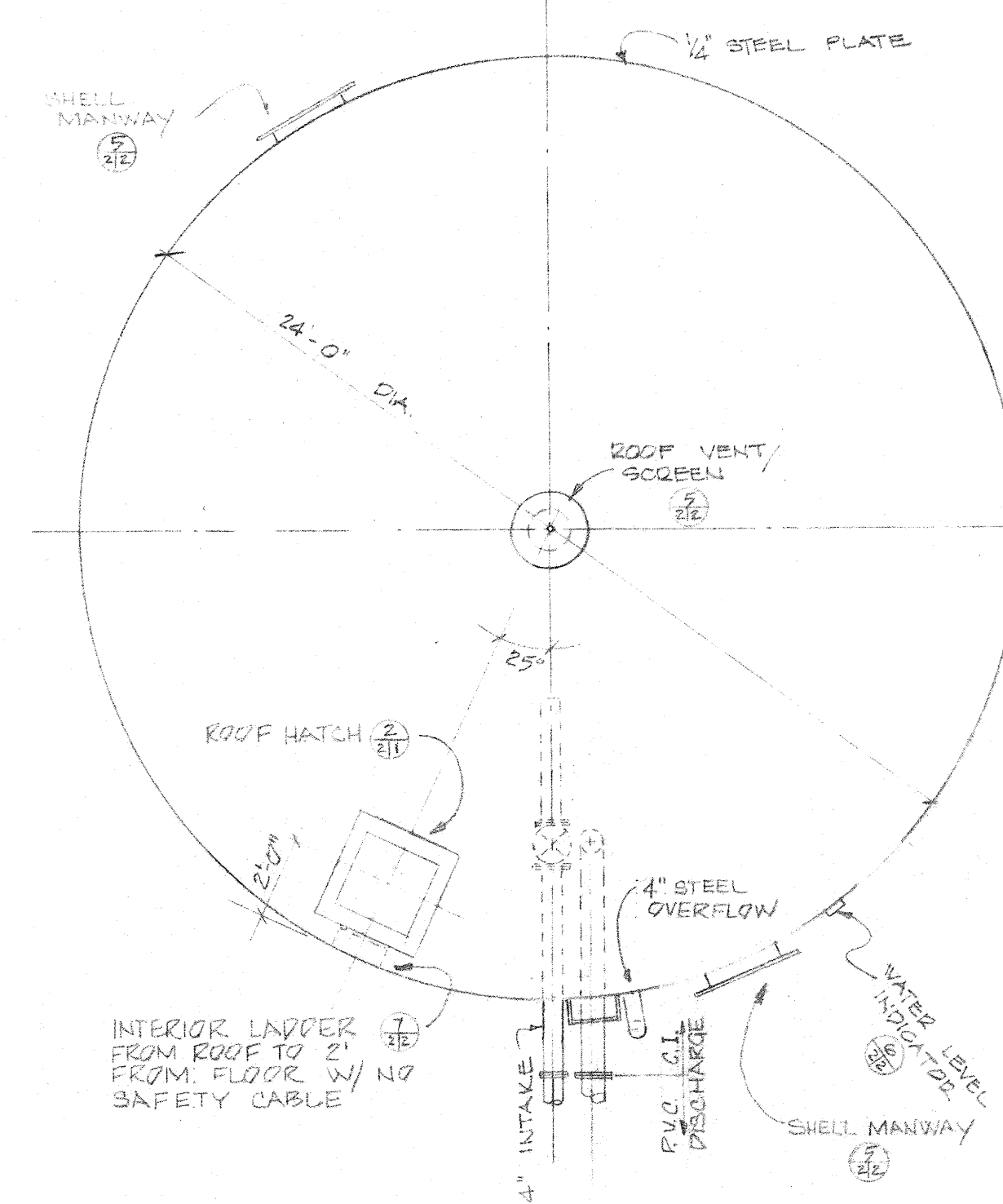


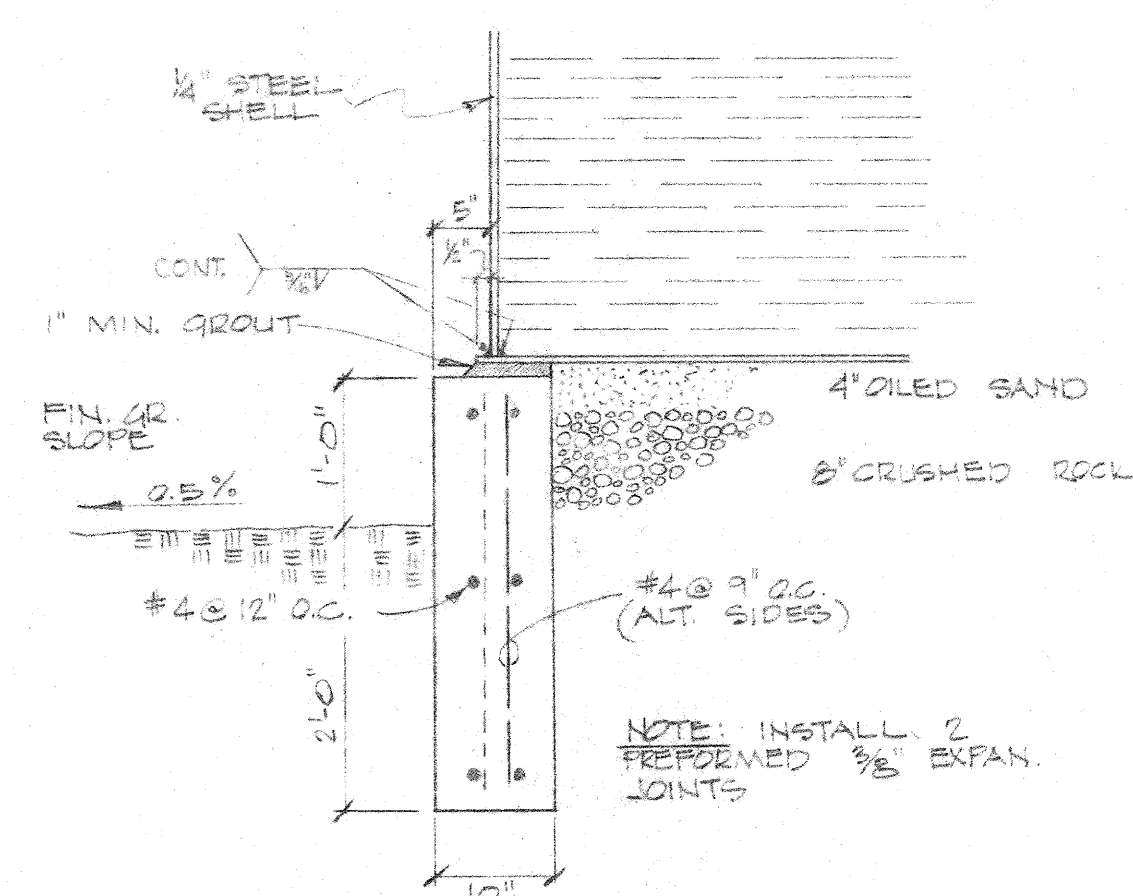
SITE PLAN
1" = 20'



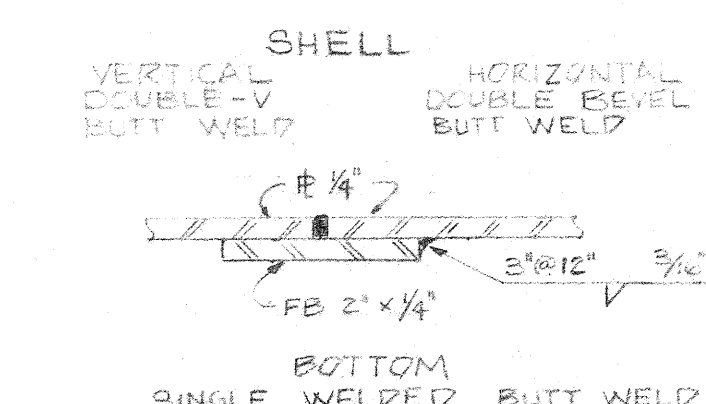
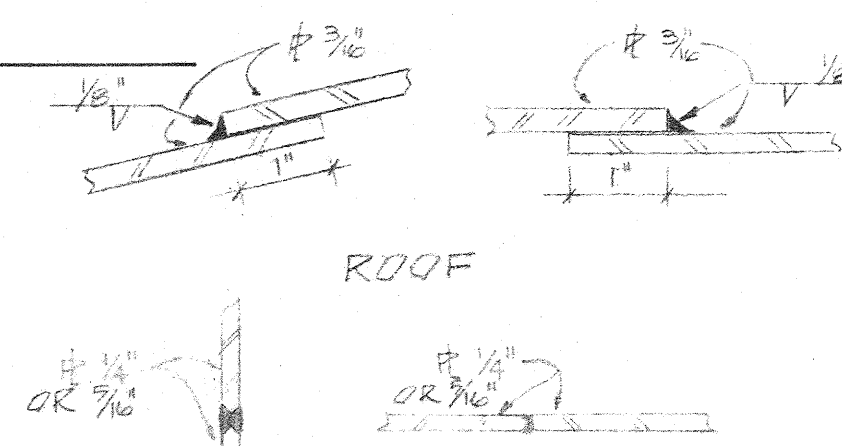
TYPICAL TANK SECTION
1/4" = 1'-0"



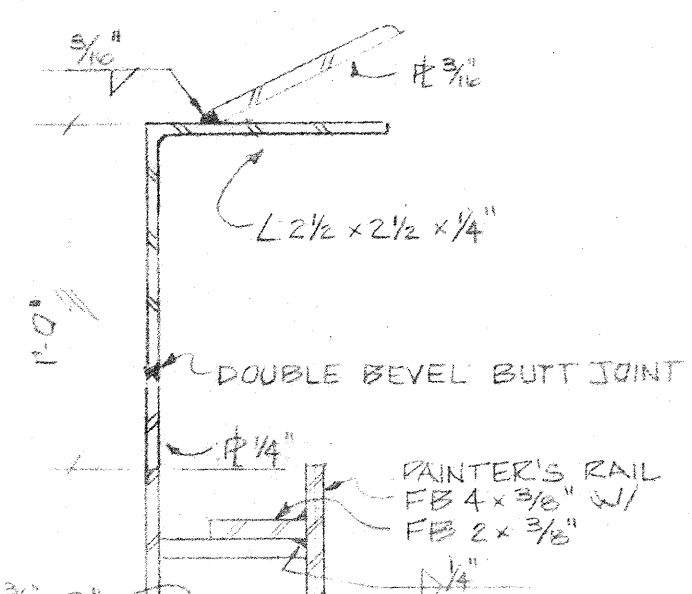
TYPICAL TANK PLAN
1/4" = 1'-0"



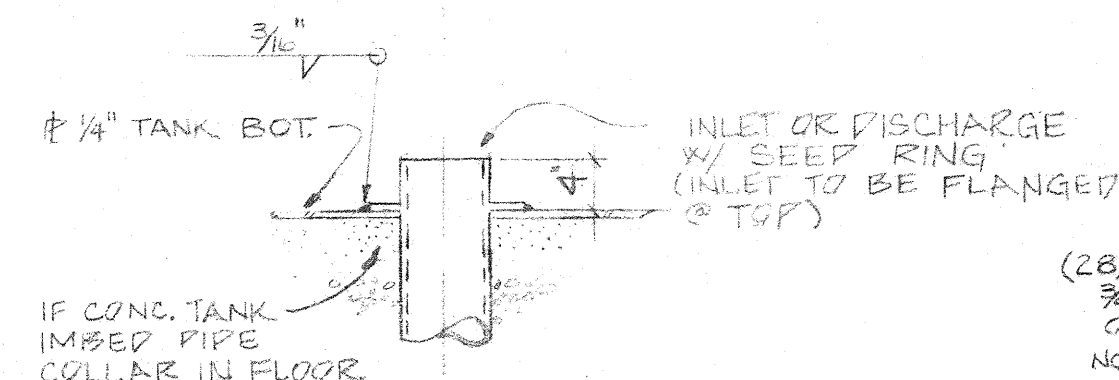
FOUNDATION DETAIL
3/4" = 1'-0"



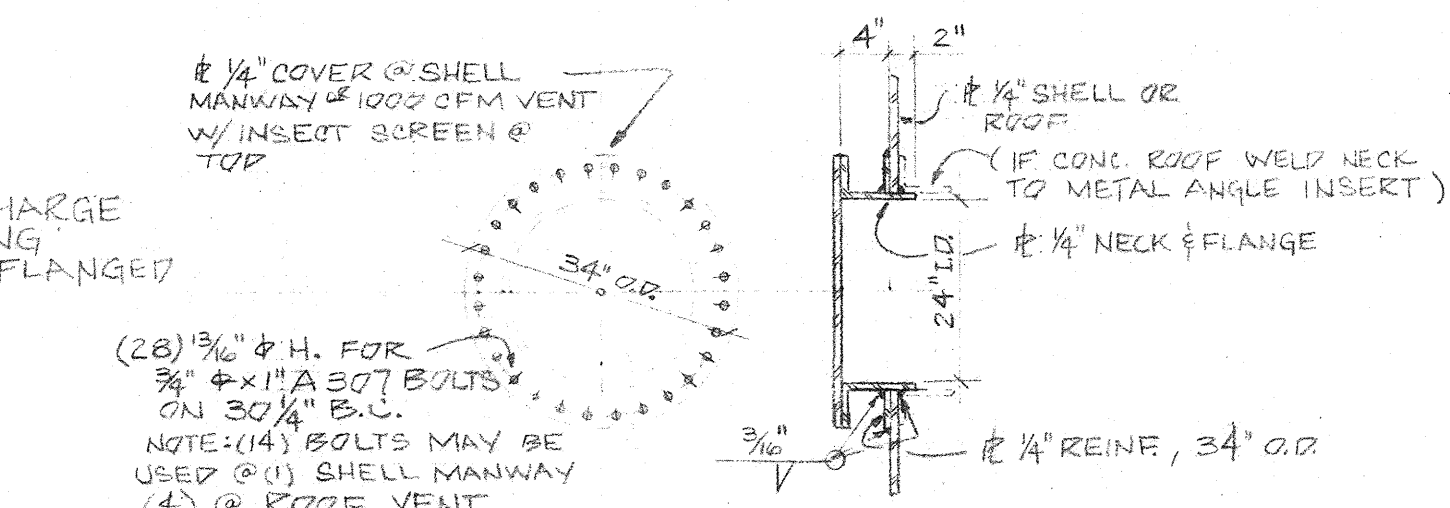
WELD DETAIL
NO SCALE



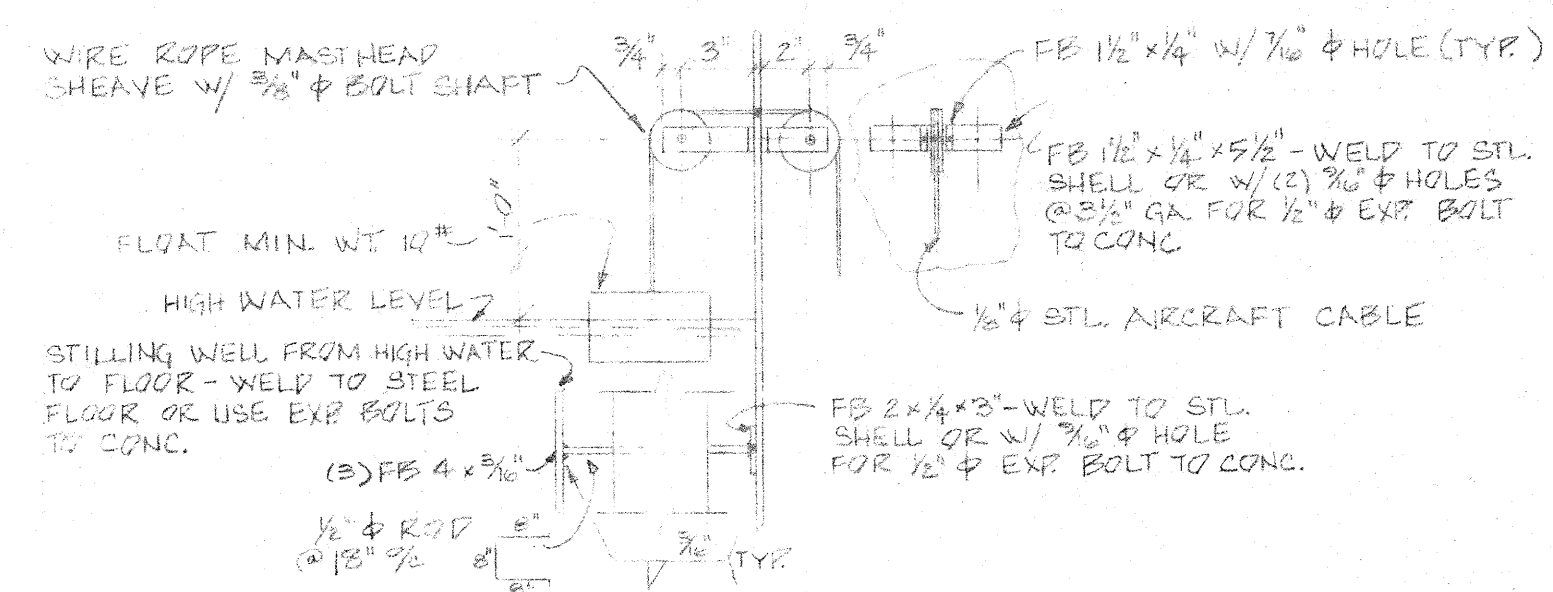
EAVE DETAIL
NO SCALE



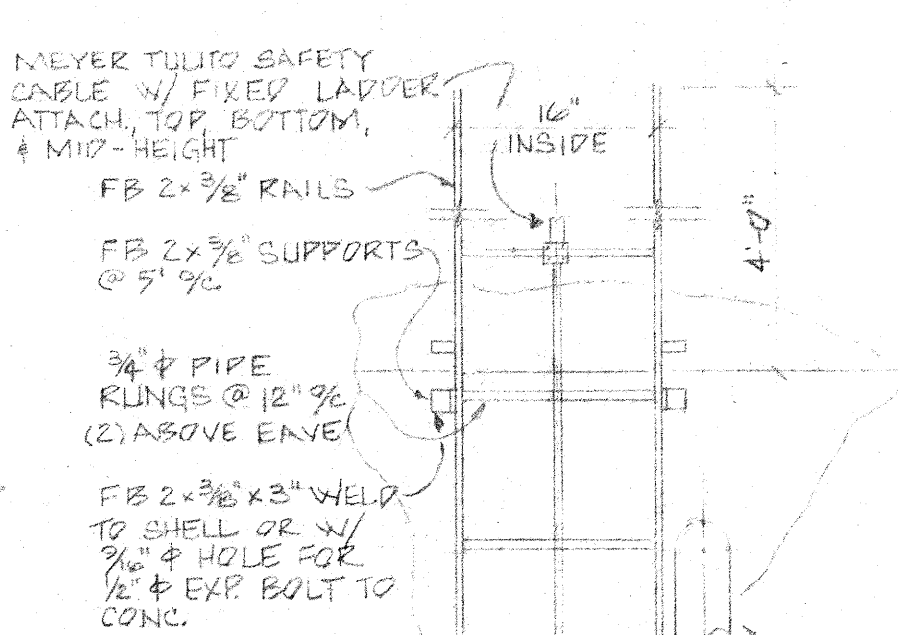
OUTLET BASE DETAIL
3/4" = 1'-0"



MANWAY & VENT DETAIL
3/4" = 1'-0"



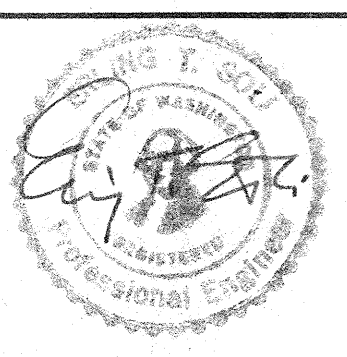
LEVEL INDICATOR DETAIL
1 1/2" = 1'-0"



LADDER DETAIL
3/4" = 1'-0"

ISSUED
SEP 20 1976
HANER, ROSS & SPORSEEN, INC.

REV. NO.	DATE	DESCRIPTION	BY



HANER, ROSS & SPORSEEN, INC.
ENGINEERS CONSULTANTS PLANNERS
220 S.W. ALDER STREET
PORTLAND, OREGON 97204
SUBMITTED 9/15/76
DESIGN 9/20
DRAWN JM 9/20
CHECKED 9/15
SUPERVISED

SKAMANIA COUNTY P.U.D. No.1
UNDERWOOD WATER SYSTEM
IMPROVEMENTS PROJECT

75,000 GALLON
ROUND
STEEL RESERVOIR
DRAWING FILE 482-A SHEET 2 OF 3